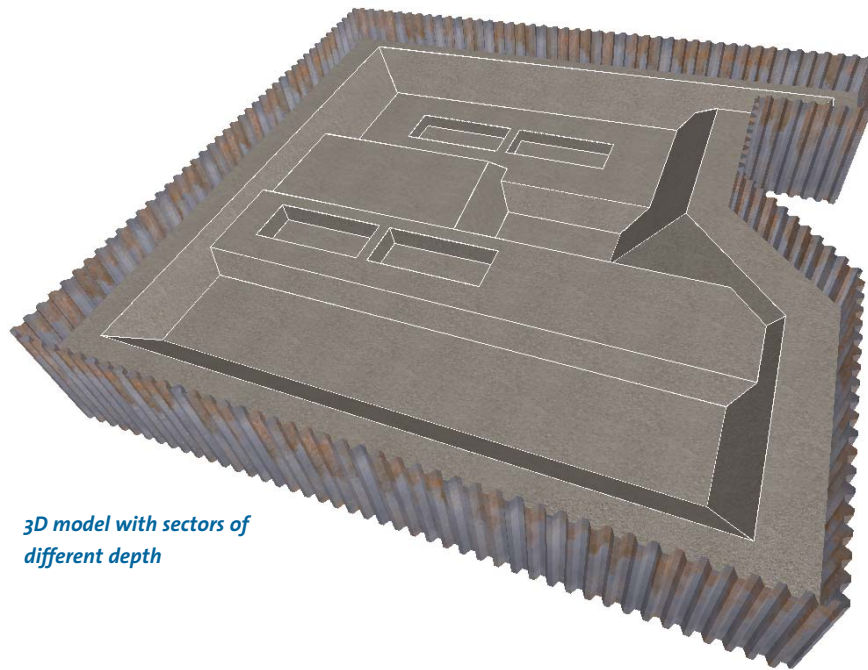




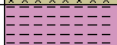


DC-Integra 3D/Volume

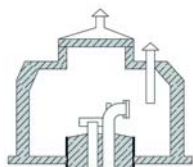
Calculation of the excavation volumes and masses of complex foundation pits at the push of a button



3D model with sectors of different depth

Cubage of excavation					
No.	Soil type	Layer name	Cubage [m³]	Spec. w. [kN/m³]	Excavation [t]
1		FILL	3090.2	19.00	5871.5
2		SAND	4249.1	18.00	7648.3
3		GRAVEL	3880.5	18.50	7178.9
4		SILT	2258.2	19.50	4403.6
5		CLAY	25.1	19.50	48.9
Total			13503.1		25151.1

Layer-based volume and mass data together with the total values



- Create a complex 3D model of the foundation pit with DC-Integra 3D
- Sectors of different depths with automatic intersection of the slopes
- Definition of a ground surface model and soil layers
- Calculation of the excavation volume and the ground masses at the push of a button
- Listing of different soil layers, e.g. for polluted material or for cohesive/non-cohesive soil
- Direct printing or transfer to MS Excel for further use

